

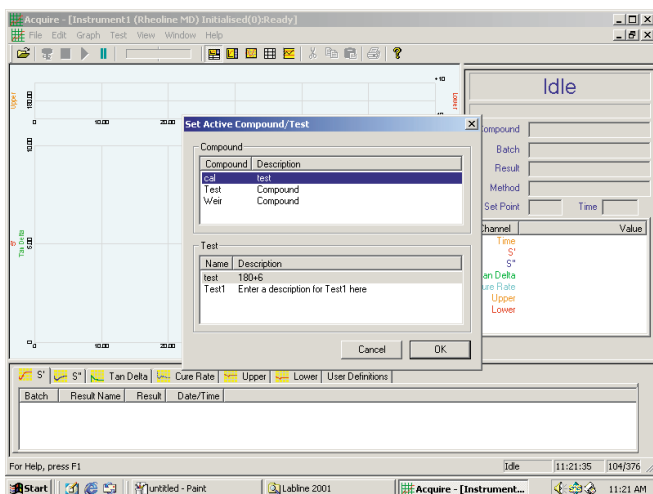
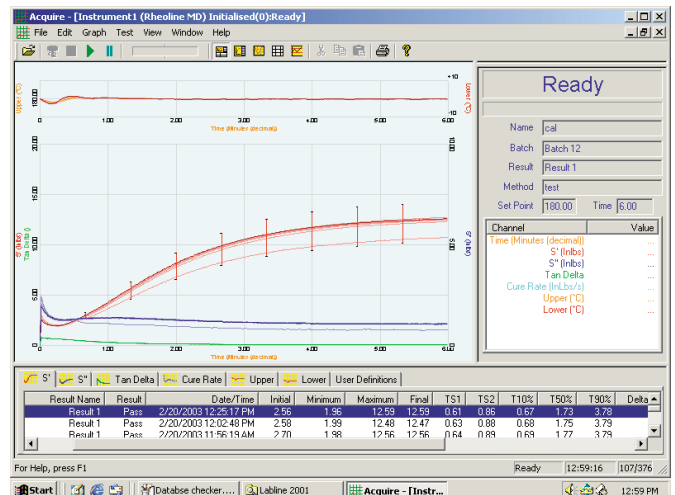


## Lab Line Software

Increasingly, laboratories are looking to integrate their test information into a more complete data network combining test data with many other measurements taken throughout the production process and Lab Line is ideally suited to this application.

Prescott Instruments' Lab Line system is a fully integrated approach, offering a network system to users of any type of Rheometer or Mooney Viscometer.

Real time displays with auto scaling of the graph axis gives the best possible presentation of testing information of test data combined with automatic pass / fail at the end of each test with fully programmable limits.



Limits can be calculated by using selected historical data to determine limits based upon multiples of standard deviation, the user also has the option to manually adjust limits to suit the individual specifications.

The software is extremely easy to operate, to run a test the operator inputs their password to log on, they load a test method, input the batch or result number and then press the button to start the test. The next test will automatically increment in steps selected by the user.

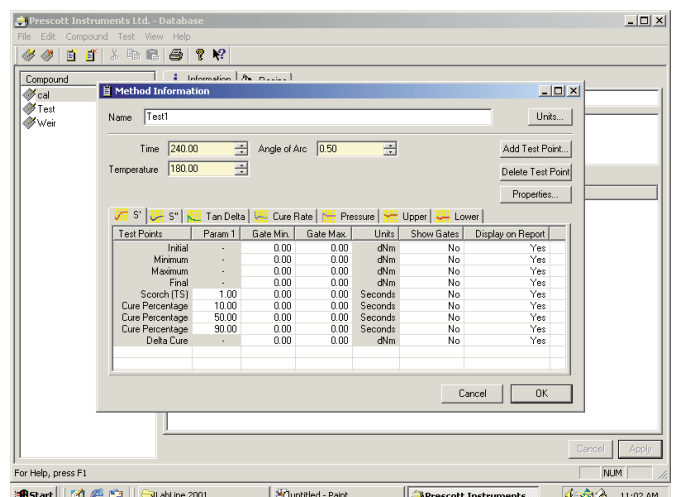
The database module holds all of the test specifications for each compound to be tested. To eliminate laborious typing of test data, simply copy and paste the methods to create a new method for new materials.

The system can accommodate any number of test instruments with all of the data held in a secure Access database.

Three levels of password protection provide all of the security to ensure the integrity of your test data.

Labline can connect to instruments by way of standard RS232 serial ports or for older generation instruments we can supply a suitable interface which will condition the signal and convert it to a serial format.

Once the test has been complete the user can print out the report or view the on line trend charts. The print outs can be triggered manually or can be preset to automatically print after x number of test.



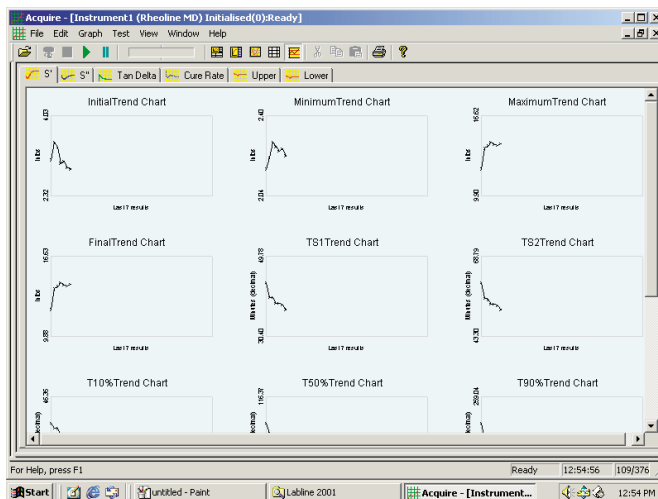
Because of the way the data is stored, it is possible to retrospectively calculate test points for individual or groups of test data.

Because the data is held in the Access format exports are very easy and it is a simple task to automatically transfer the data to external software.

Batch	Result Name	Result	Date/Time
Batch 11	Result 1	Pass	2/20/2003 12:25:17 PM
Batch 10	Result 1	Pass	2/20/2003 12:02:48 PM
Batch 9	Result 1	Pass	2/20/2003 11:56:19 AM
Batch 8	Result 1	Pass	2/20/2003 11:49:51 AM
Batch 7	Result 1	Pass	2/20/2003 11:43:25 AM
Batch 6	Result 1	Pass	2/20/2003 11:36:19 AM
Batch 5	Result 1	Pass	2/20/2003 11:25:05 AM
	Mean		
	Standard Deviation		

For extra security Lab line comes with a database checker to ensure the integrity of stored data within the database structure.

Labline has multi lingual capabilities and will operate on Windows 98 V2, NT, 2000 and XP.



The software has a flexible approach when it comes to adding functionality, many users wish to create extra columns of data for other test parameters such as density or hardness, this can be easily achieved by adding a user definition column of you choice.

The DB Checker dialog box has a title bar 'DB Checker' and a close button. It contains a section 'Select the options to be performed.' with three checkboxes: 'Check DB Integrity', 'Repair Database', and 'Compact Database'. Below these is a 'Start' button. At the bottom, there is a 'Percent Complete' progress bar, a 'Close' button, and a 'Help' button.

**Notice:**

Although the information and recommendations set forth herein (hereinafter "Information") are presented in good faith and believed to be correct as of the date hereof. Prescott Instruments Ltd. make no representation or warranties as to the completeness or accuracy thereof. Information is supplied upon the conditions that the persons receiving same will make their own determination as to the suitability for their purposes prior to use. In no event will Prescott Instruments Ltd. be responsible for damages of any nature whatsoever resulting from the use or reliance upon information for the product, equipment or system to which information refers. Nothing contained herein is to be construed as recommendation to use any product, equipment, system, process or formulation in conflict with any patent, and Prescott Instruments Ltd. makes no representation or warranty, express or implied, that the use thereof will not infringe any patent, except for the limited warranty set forth in Prescott Instruments Ltd. standard sales contracts for its equipment and services.

**PRESCOTT INSTRUMENTS LTD. MAKES NO REPRESENTATIONS OR WARRANTIES WHETHER STATUTORY, EXPRESS OR IMPLIED, OF MERCHANTABILITY FITNESS FOR A PARTICULAR PURPOSE, OR OF ANY OTHER NATURE WITH RESPECT TO THE INFORMATION OR PRODUCT, EQUIPMENT OR SYSTEM TO WHICH INFORMATION REFERS.**



**PRESCOTT  
INSTRUMENTS LTD**

Prescott Instruments Ltd. Unit F, Northway Trading Estate,  
Northway Lane, Tewkesbury, Gloucester GL20 8JH U.K.  
Tel: +44 (0) 1684 274300 Fax: +44 (0) 1684 293223  
Email: enquiries@prescott-instruments.com  
Website: www.prescott-instruments.com

